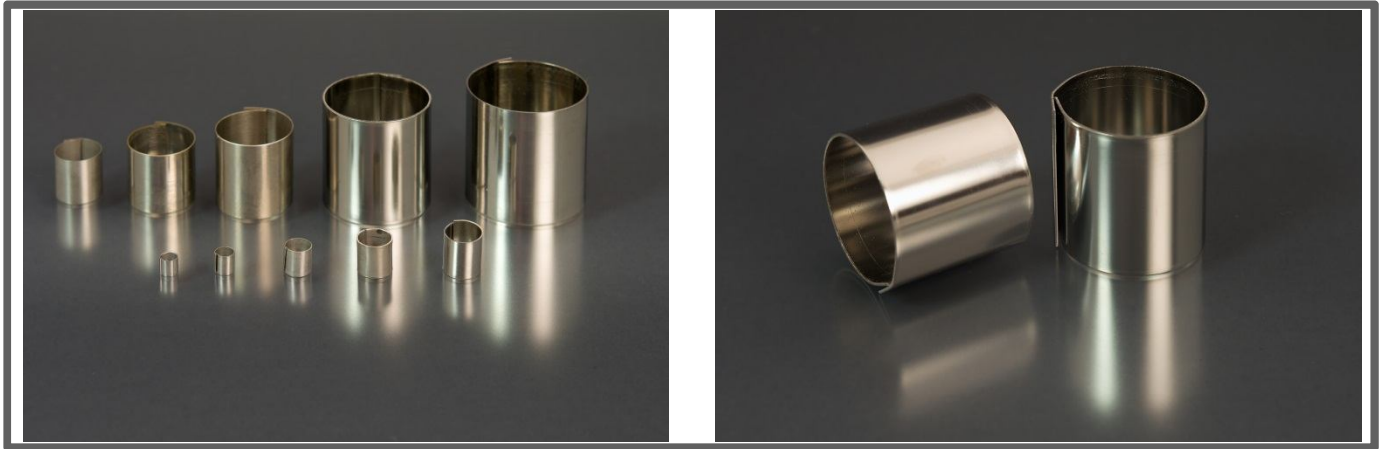


Raschig Rings

Traditional Metal Tower Packing Invented by Dr. Fritz Raschig



Size* (inches) (mm)	0.250** 6	0.312** 8	0.375** 10	0.625** 16	0.750** 19	1.00** 25	1.50*** 38	2.00*** 50
Pieces (#/ft ³)	88,000	45,000	27,000	6,190	3,340	1,430	400	168
Weight (lb _m /ft ³ , carbon steel****)	133	120	94	62	52	39	49	37
Surface Area (ft ² /ft ³)	224	190	161	103	81	62	39	29
Packing Factor, F	700	505	390	170	185	115	83	57
Void (%)	72	75	81	87	89	92	90	92

* Other sizes available, please inquire.

** Wall thickness 0.032 inches.

*** Wall thickness 0.062 inches.

**** Other metals such as 304 and 316 SS available, please inquire.

For more information and design assistance, please contact us at:

Raschig USA, Inc.
Formerly Raschig Jaeger Technologies
 2201 E. Lamar Blvd. #240
 Arlington, TX 76006
 800-678-0345
 817-695-5680
 info@raschig-usa.com

IMPORTANT: The following supersedes Buyer's Documents. SELLER MAKES NO REPRESENTATION OR WARRANTY, EXPRESS OR IMPLIED, INCLUDING OF MERCHANTABILITY OR FITNESS FOR A PARTICULAR PURPOSE. No statements herein are to be construed as inducements to infringe any relevant patent. Under no circumstances shall Seller be liable for incidental, consequential or indirect damages for alleged negligence, breach of warranty, strict liability, tort or contract arising in connection with the product(s). Buyer's sole remedy and Seller's sole liability for any claims shall be Buyer's purchase price. Data and results are based on controlled or lab work and must be confirmed by Buyer by testing for intended conditions of use. The product(s) has not been tested for, and is therefore not recommended for, uses for which prolonged contact with mucous membranes, abraded skin, or blood is intended; or for uses for which implantation within the human body is intended.